

EQUIP TYPE ~~FR-100A~~ EXP. NO.

COL. 540 7886 003

NOTICE: WHEN GOVERNMENT DRAWINGS, SPECIFICATIONS, OR OTHER DATA ARE USED FOR ANY PURPOSE OTHER THAN IN CONNECTION WITH A DEFINITELY RELATED GOVERNMENT PROCUREMENT OPERATION, THE UNITED STATES GOVERNMENT THEREBY INCURS NO RESPONSIBILITY FOR ANY OBLIGATION WHATSOEVER, AND THE FACT THAT THE GOVERNMENT MAY HAVE FORMULATED, PROVIDED, OR IN ANY WAY SUPPLIED THE SAID DRAWINGS, SPECIFICATIONS, OR OTHER DATA IS NOT TO BE REGARDED AS IMPLICATION OR OTHERWISE AS IN ANY MANNER LICENSING THE HOLDER OR ANY OTHER PERSON OR CORPORATION, OR CONFERRING ANY RIGHTS OR PERMISSION TO REPRODUCE, COPY, USE, OR SELL ANY PATENTED INVENTION THAT MAY IN ANY WAY BE RELATED THERETO.

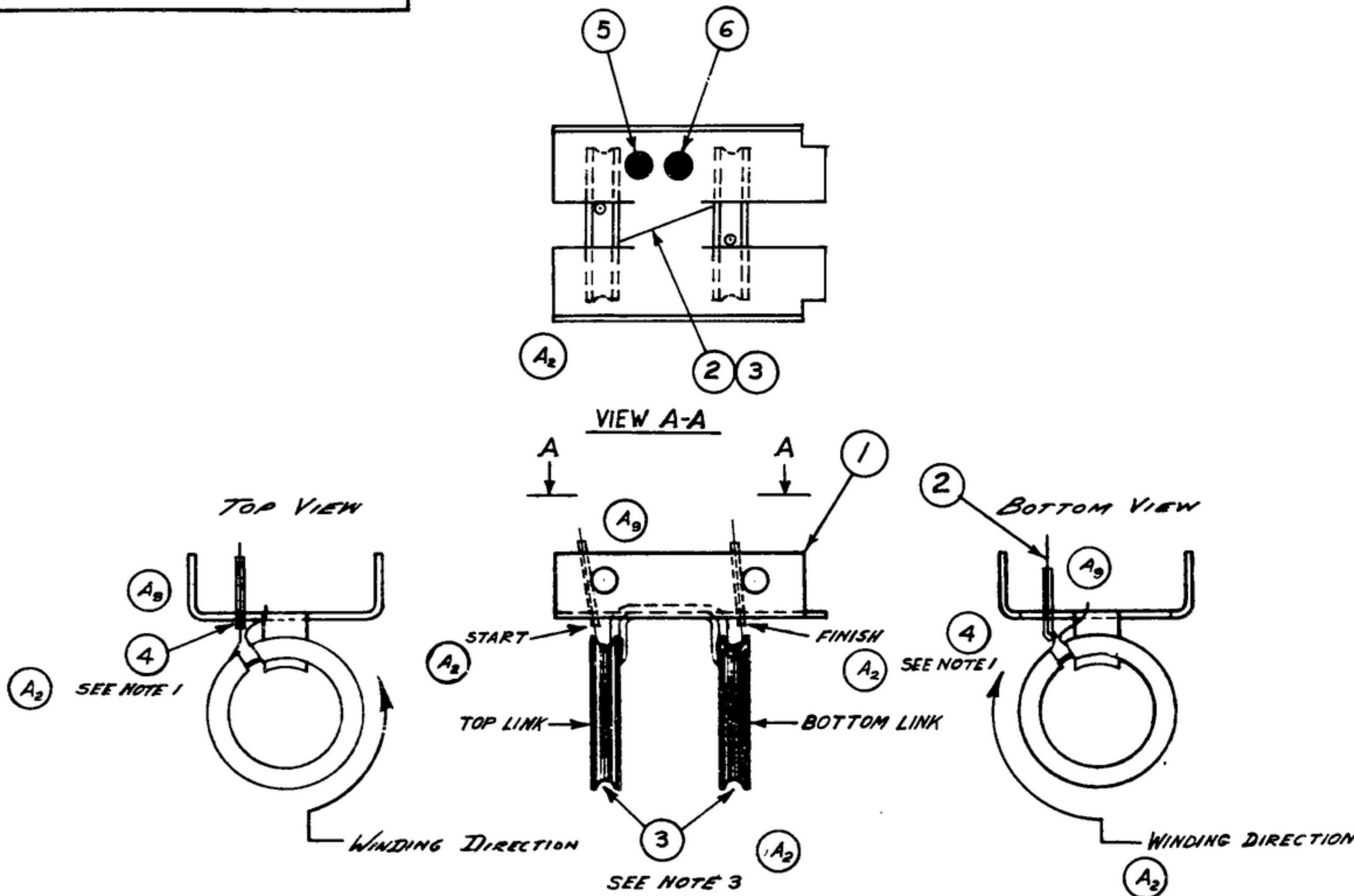
THIS DOCUMENT HAS BEEN PURCHASED BY THE GOVERNMENT AND MAY BE REPRODUCED AND USED IN CONNECTION WITH ANY GOVERNMENT PROCUREMENT OR MAINTENANCE OPERATION.

\* FOR INFORMATION ONLY. CONTRACTOR MAY AT HIS OPTION DEVIATE FROM THESE PROCESS DETAILS.

\* SWE APPROVAL  
SYM FR-100A-07

REVISIONS

SYM	DESCRIPTION	DATE	APPROVAL
A <sub>10</sub>	A <sub>1</sub> - RENUMBERED NOTES A <sub>2</sub> - ADDED VIEW A-A NOTATIONS & CALLOUTS A <sub>3</sub> - ADDED ITEMS 4, 5, & 6 A <sub>4</sub> - ADDED NOTES 1, 2 & 5 A <sub>5</sub> - RENORDED NOTE 3 - "PART #A27" WAS "TRANSPARENT" & "MAX. NO. 27." A <sub>6</sub> - NOTE 4 WAS "SINGLE CONDUCTOR, E <sub>3</sub> SILK MAGNET #28." A <sub>7</sub> - ITEM 3, "LACQUER" WAS COATING MATERIAL. A <sub>8</sub> - SWE PART NOS. REPLACED COLLINS PART NOS. A <sub>9</sub> - ADDED VIEW OF SLEEVING A <sub>10</sub> - IN ITEM 2 DESCRIPTION WAS "WIRE" & MATERIAL SPEC. WAS "ASA CB. 6 & CB. 7"	16 DEC 59	42428-7C-59 -A1-59
			REV'D PME



1. ALLOWING 1 1/2 INCHES FOR LEAD LENGTHS, INSERT 1/2 INCH SLEEVING UP TO "START" OF WINDING & WIND REQUIRED NUMBER OF TURNS ON TOP & BOTTOM LINKS.
2. INSERT 5/8 INCH SLEEVING UP TO "FINISH" OF WINDING & ANCHOR BOTH LEADS TO BRACKET.
3. APPLY COATING MATERIAL (ITEM 3) AS SUPPLIED BY COMMUNICATION PRODUCTS CO. MARLBORO NEW JERSEY PART # A-27 WITH FUNGICIDE OR EQUAL, TO HOLD WINDING IN PLACE.
4. SINGLE CONDUCTOR SINGLE SILK, HEAVY POLYURETHANE #28 AWG MAGNET WIRE.
5. APPLY COLOR CODING LACQUERS (ITEMS #5 & 6) LOCATED AS SHOWN.

SYM	QTY	REQ'D	PART NO.	DESCRIPTION	MATL.	MATL. SPEC.	NOTE
A <sub>3</sub>	6	REQ'D		LACQUER, BROWN CODING		TT-L-31	5
A <sub>3</sub>	5	REQ'D		LACQUER, BLACK CODING		TT-L-31	5
A <sub>7</sub>	4	1	SM-B-249214	SLEEVING, SILICONE 1/2 IN			1 & 2
A <sub>10</sub>	3	REQ'D		LACQUER			3
A <sub>10</sub>	2	REQ'D	SM-C-249080-1	WIRE, MAGNET 19 1/2 IN		MIL-W-583	4
A <sub>10</sub>	1	1	SM-C-249078	LINK ASSY			

LIST OF MATERIAL COLLINS PART NO. 558 0418 003

DRAWN <b>NUGEN</b>	CHECKED <i>llm</i>	APPROVED	COLLINS-RADIS-60 2528-RADIS-IOWA <b>14214-PH-51-93</b>	DEPARTMENT OF THE ARMY SIGNAL CORPS ENGINEERING LABORATORIES
UNLESS OTHERWISE SPECIFIED: DECIMAL DIMENSIONS INCLUDING HOLE SIZES MAY VARY ±.005 FRACTIONAL DIMENSIONS INCLUDING HOLE SIZES MAY VARY ±1/64 MACHINED ANGLES MAY VARY ±.1° SHEARED ANGLES MAY VARY ±.25° BROKEN ANGLES MAY VARY ±.1° ECCENTRICITY BETWEEN ANY DIAMETERS ON THE SAME CENTERLINE SHALL NOT EXCEED .010 TOTAL INDICATOR READING. ALL DIMENSIONS ARE FINISH DIMENSIONS INCLUDING APPLIED FINISH AND ARE GIVEN IN INCHES.			SIGNAL CORPS	FORT MONMOUTH NEW JERSEY
558 0418 002 - 1 SM-B-249067 SG-DE-248775			REVIEWED <b>PME</b>	LINK ASSY
COLLINS NO. - 677 NEXT ASSY USED ON			APPROVED <b>HLV PME</b>	
APPLICATION			DATE <b>3 JAN 56</b> SCALE <b>2 / 1</b>	<b>SM-C-249080</b>